

JetPaySM JetComSM

Installation Guide



Table of Contents

Introduction	3
Advantages of the JetPay Payment Gateway	3
Software Requirements.....	4
Installation.....	5
To install JetPay JetCom.....	5
To uninstall JetPay JetCom.....	8
Installation Files.....	10

Introduction

JetPaySM JetComSM is a Component Object Model (COM), or ActiveX, Dynamic Link Library (.dll) that provides a programmatic interface for processing secure credit card transactions.

The JetCom product includes a number of components that enable application development for, and transaction processing with, the JetPay system. Also included in the product are the JetCom core engine (**vxJetCom.dll**) and several tools that facilitate application development and transaction processing using that component.

Advantages of the JetPay Payment Gateway

You do not need to install any additional language interpreters (for example, Perl) using the JetPay payment gateway. In fact, you do not need any additional software. There are no language or software dependencies; you can run the process from virtually anywhere:

- a Perl script on Apache;
- an ASP page on IIS;
- or from any Windows fat-client app.

In addition, the JetPay payment gateway lets you optionally package order and customer information with the credit card transaction. This makes it possible to quickly and easily tie reported transactions to bank statement and receipt information, which makes transaction balancing quick, easy, and verifiable. In fact, without this capability, you could easily put your company in serious jeopardy.

Software Requirements

- Microsoft Windows 2000 with Service Pack 2 (or Microsoft NT Server 4.0 with Service Pack 6a and Option Pack)
- A Web Server (such as Internet Information Server—IIS)
- vxJetCom.dll—the JetCom Component Object Model (COM)/ActiveX component .dll
- Access to a Microsoft SQL Server 7 database (if you want to enable local transaction logging)

Note

Additional requirements not mentioned above might include whatever software you need to make secure posts.

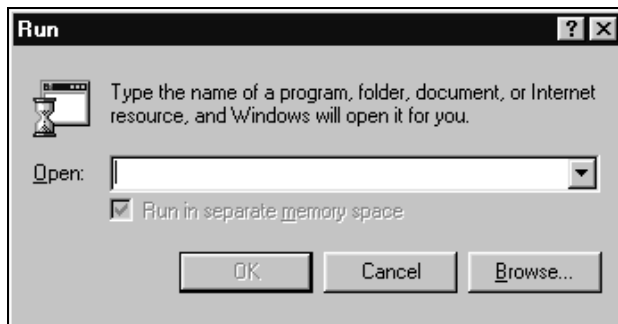
Installation

This section explains how to install and uninstall the software included in this JetPay JetCom software package.

Use the following procedure to install the JetCom program files from the CD-ROM. You cannot run the JetPay JetCom components from the CD-ROM; you must install the components onto your hard disk drive.

To install JetPay JetCom

1. Restart Windows and do not start any other applications.
2. Insert the JetPay JetCom CD-ROM into the CD-ROM drive.
3. On the taskbar, click the **Start** button and click **Run**. The Run dialog box appears.



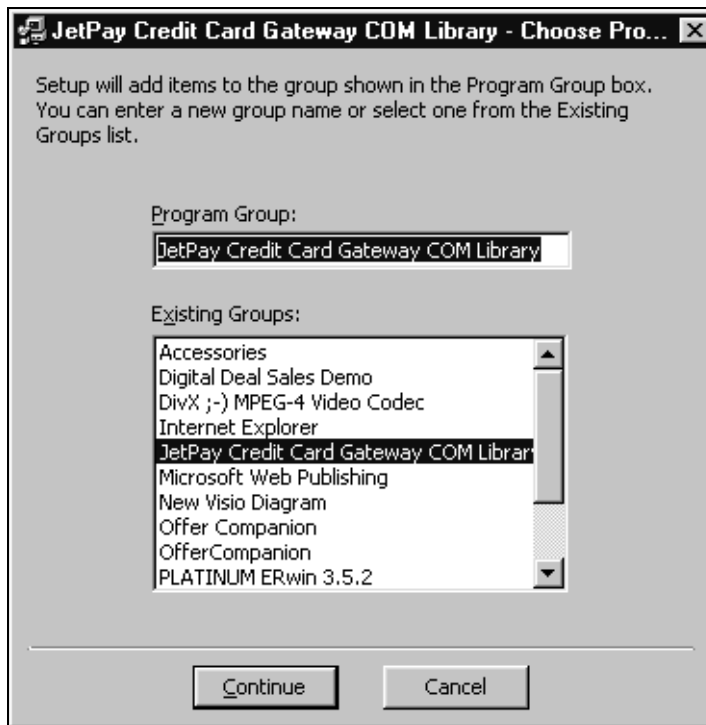
4. In the **Open** box, type **x:\setup.exe** (where **x:** is the CD-ROM drive letter). The Welcome screen appears.



5. Click **OK** to begin the installation process. The Change Directory screen appears.



6. If you want to install the program files to a folder other than the default folder, click **Change Directory**. Otherwise, click the **Install** button to begin installing JetPay JetCom. The **Choose Program Group** dialog box appears.



-
7. If you want to create a program group other than the default program group, enter that new name in the **Program Group** box. Otherwise, click **Continue** to begin installing JetPay JetCom.

Note

If a Version Conflict dialog box appears warning you that a file being copied is not newer than the file currently on your system, click **Yes** to keep this file.

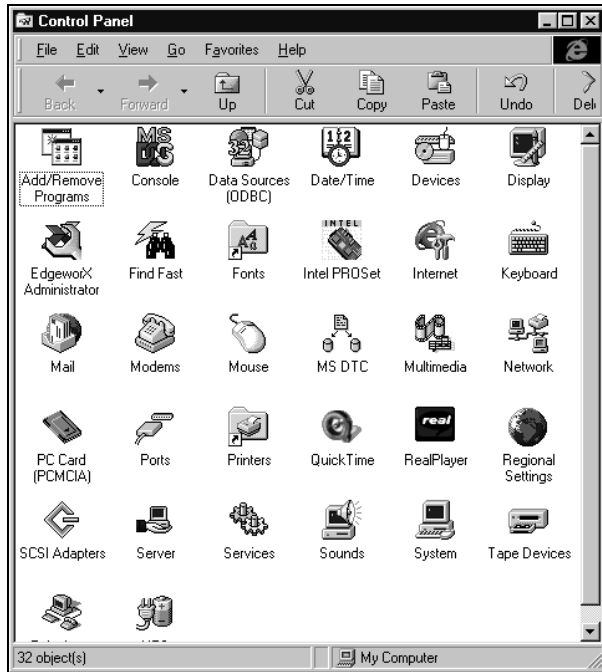
After the installation routine finishes installing the program files, the following information box appears:



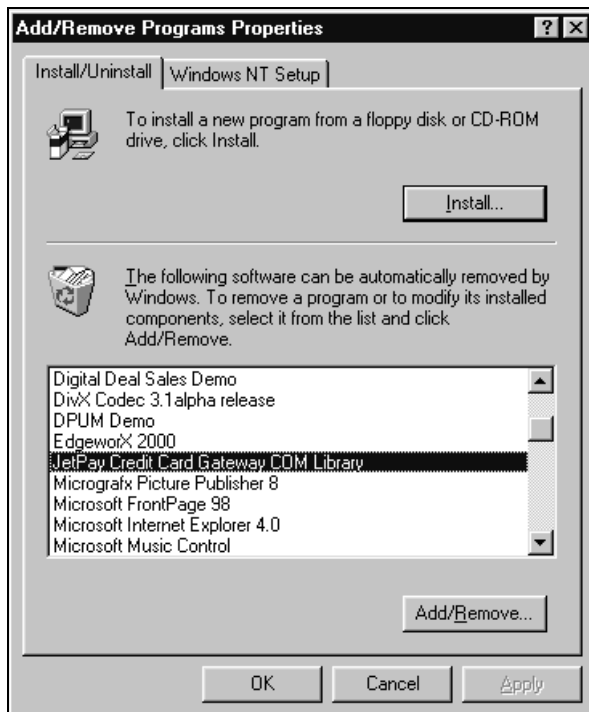
8. Click **OK** to finish the JetPay Credit Card Gateway COM Library Setup.

To uninstall JetPay JetCom

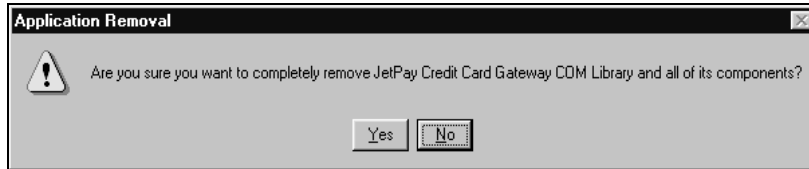
1. On the taskbar, click the **Start** button, point to **Settings**, and click **Control Panel**. The Control Panel window appears.



2. Double-click the **Add/Remove Programs** icon. The Add/Remove Programs Properties dialog box appears.

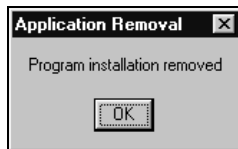


-
3. Select **JetPay Credit Card Gateway COM Library** from the list of installed software.
 4. Click **Add/Remove**. The Application Removal dialog box appears.



5. Click **Yes** to begin the uninstall routine.

After the uninstallation routine finishes uninstalling the program files, the following box appears:



6. Click **OK** to finish the JetPay Credit Card Gateway COM Library uninstallation.

Installation Files

The following table lists all of the files that are included in the JetPay Credit Card Gateway COM Library Setup. The file locations below assume that you accepted the default folder location during the installation (that is, **x:\Program Files\JetPay Credit Card Gateway COM Library**):

Filename	Path
JetCom Documentation (Internet shortcut)	x:\Program Files\JetPay Credit Card Gateway COM Library
St6unst.log	x:\Program Files\JetPay Credit Card Gateway COM Library
CjetComOPPConfig.cls	x:\Program Files\JetPay Credit Card Gateway COM Library\JetComOppCfg\source\Classes
FjetComOPPConfig.frx	x:\Program Files\JetPay Credit Card Gateway COM Library\JetComOppCfg\source\Forms
FJetComOPPConfig.frm	x:\Program Files\JetPay Credit Card Gateway COM Library\JetComOppCfg\source\Forms
modGlobal.bas	x:\Program Files\JetPay Credit Card Gateway COM Library\JetComOppCfg\source\Modules
vxJetComOPPCfg.vbp	x:\Program Files\JetPay Credit Card Gateway COM Library\JetComOppCfg\source
CJetComOPP.cls	x:\Program Files\JetPay Credit Card Gateway COM Library\JetComOpp\source\Classes
vxJetComOPP.vbp	x:\Program Files\JetPay Credit Card Gateway COM Library\JetComOpp\source
vxJetComOPP.dll	x:\Program Files\JetPay Credit Card Gateway COM Library\JetComOpp\lib
vxJetCom.chm	x:\Program Files\JetPay Credit Card Gateway COM Library\help
simplevoid.txt	x:\Program Files\JetPay Credit Card Gateway COM Library\DemoApp\Cert
simplesale.txt	x:\Program Files\JetPay Credit Card Gateway COM Library\DemoApp\Cert
simplereversal.txt	x:\Program Files\JetPay Credit Card Gateway COM Library\DemoApp\Cert
simpleforce.txt	x:\Program Files\JetPay Credit Card Gateway COM Library\DemoApp\Cert

Filename	Path
simplecredit.txt	x:\Program Files\JetPay Credit Card Gateway COM Library\DemoApp\Cert
simplecheck.txt	x:\Program Files\JetPay Credit Card Gateway COM Library\DemoApp\Cert
simpleauthonly.txt	x:\Program Files\JetPay Credit Card Gateway COM Library\DemoApp\Cert
sequence.txt	x:\Program Files\JetPay Credit Card Gateway COM Library\DemoApp\Cert
extendedvoid.txt	x:\Program Files\JetPay Credit Card Gateway COM Library\DemoApp\Cert
extendedsale.txt	x:\Program Files\JetPay Credit Card Gateway COM Library\DemoApp\Cert
extendedreversal.txt	x:\Program Files\JetPay Credit Card Gateway COM Library\DemoApp\Cert
extendedforce.txt	x:\Program Files\JetPay Credit Card Gateway COM Library\DemoApp\Cert
extendedcredit.txt	x:\Program Files\JetPay Credit Card Gateway COM Library\DemoApp\Cert
extendedcheck.txt	x:\Program Files\JetPay Credit Card Gateway COM Library\DemoApp\Cert
extendedauthonly.txt	x:\Program Files\JetPay Credit Card Gateway COM Library\DemoApp\Cert
TestJetPay.vbp	x:\Program Files\JetPay Credit Card Gateway COM Library\DemoApp\source
FTestJetPay.frm	x:\Program Files\JetPay Credit Card Gateway COM Library\DemoApp\source
FTestJetPay.frx	x:\Program Files\JetPay Credit Card Gateway COM Library\DemoApp\source
vxJetCom.dll	x:\Program Files\JetPay Credit Card Gateway COM Library\lib
vxJetComOPPCfg.dll	x:\Program Files\JetPay Credit Card Gateway COM Library\JetComOppCfg\lib
vxJetComOPPreG.reg	x:\Program Files\JetPay Credit Card Gateway COM Library\JetComOpp\Reg
vxJetComSettings.reg	x:\Program Files\JetPay Credit Card Gateway COM Library\Reg
TestJetPay.exe	x:\Program Files\JetPay Credit Card Gateway COM Library\DemoApp

Filename	Path
JetLogBuild.sql	x:\Program Files\JetPay Credit Card Gateway COM Library\ConfigEditor
vxJCCfg.exe	x:\Program Files\JetPay Credit Card Gateway COM Library\ConfigEditor
msvbvm60.dll	x:\WINNT\system32
oleaut32.dll	x:\WINNT\system32
olepro32.dll	x:\WINNT\system32
comdlg32.ocx	x:\WINNT\system32
tabctl32.ocx	x:\WINNT\system32
hh.exe	x:\WINNT\system32
itircl.dll	x:\WINNT\system32
itss.dll	x:\WINNT\system32
hhctrl.ocx	x:\WINNT\system32
https50.ocx	x:\WINNT\system32
Asycfilt.dll	x:\WINNT\system32